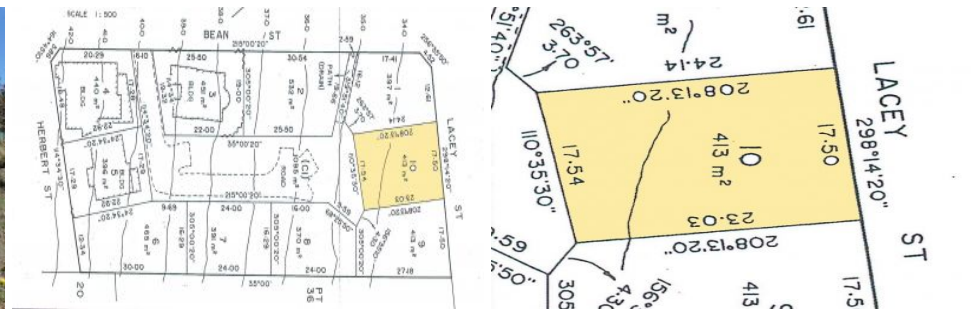




Peter Calliss

REAL ESTATE



10/4 Obrien Close Whyalla SA

Enjoy the experience of building and using your own ideas to capitalize on one of these Courtyard allotments whilst living in one of Whyalla's most admired locations surrounded by tree lined streets, very close to the Whyalla Hospital, cafes and good local shopping and a short walk to the beautiful outstretched Whyalla Foreshore with its wonderful parks and gardens, café and fishing.

If your downsizing, looking for low maintenance living so you can just pack up and travel, investing or just starting up and want to start with quality.. Obrien Close is the place to start .. with the peace of mind that your investment in Obrien Close will be protected by a Community Scheme and Bi-Laws to retain all the benefits the location has to offer.

Type	: Land
Price	: \$120,000
Land Size	: 413 sqm
View	: https://www.petercalliss.com.au/sale/sa/eyr-e-peninsula/whyalla/residential/land/7334596

[For full version visit the website](https://www.petercalliss.com.au)

<https://www.petercalliss.com.au>