



15 Farrell Street Whyalla SA

VARIETY OF RETAL/ COMMERCIAL OPTIONS

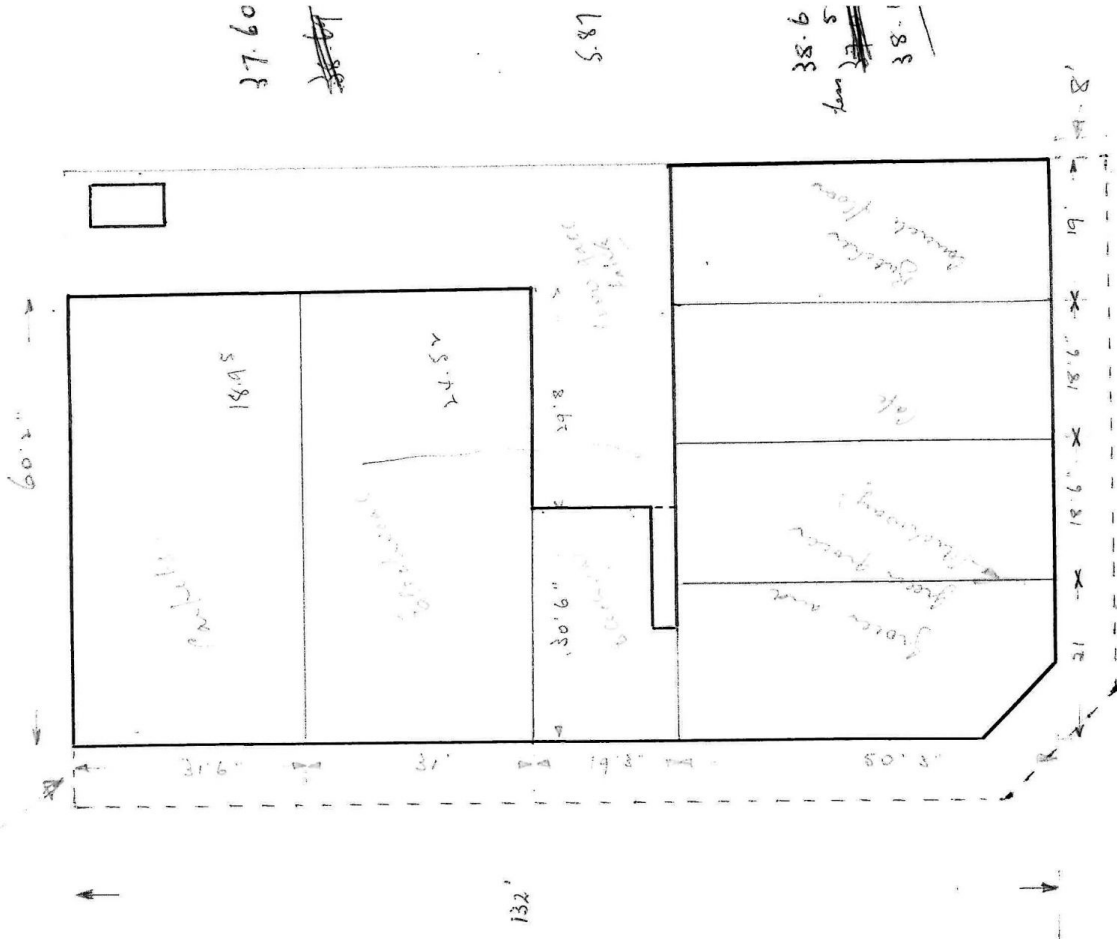
Ideal commercial investment opportunity on prime corner site. Allows 5 tenancies with potential for rental income of \$60,000 per annum. Room to develop further to suit additional tenancy.

Direct on street parking at the front door....

Enquiries to Peter Calliss 0419 817 489.

10 

Price : \$560,000
Building Size : 850 sqm
View : <https://www.petercalliss.com.au/sale/sa/eyre-peninsula/whyalla/commercial/retail/8006201>



37.60

~~38.6~~

5.89

38.6
5
38.1

~~38.6~~

38.1

82.16 less corner 50 = 81.66