



## 12 McRitchie Crescent Whyalla Stuart SA

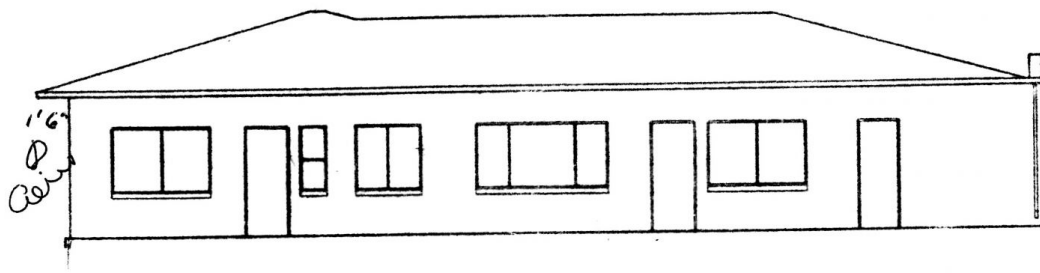
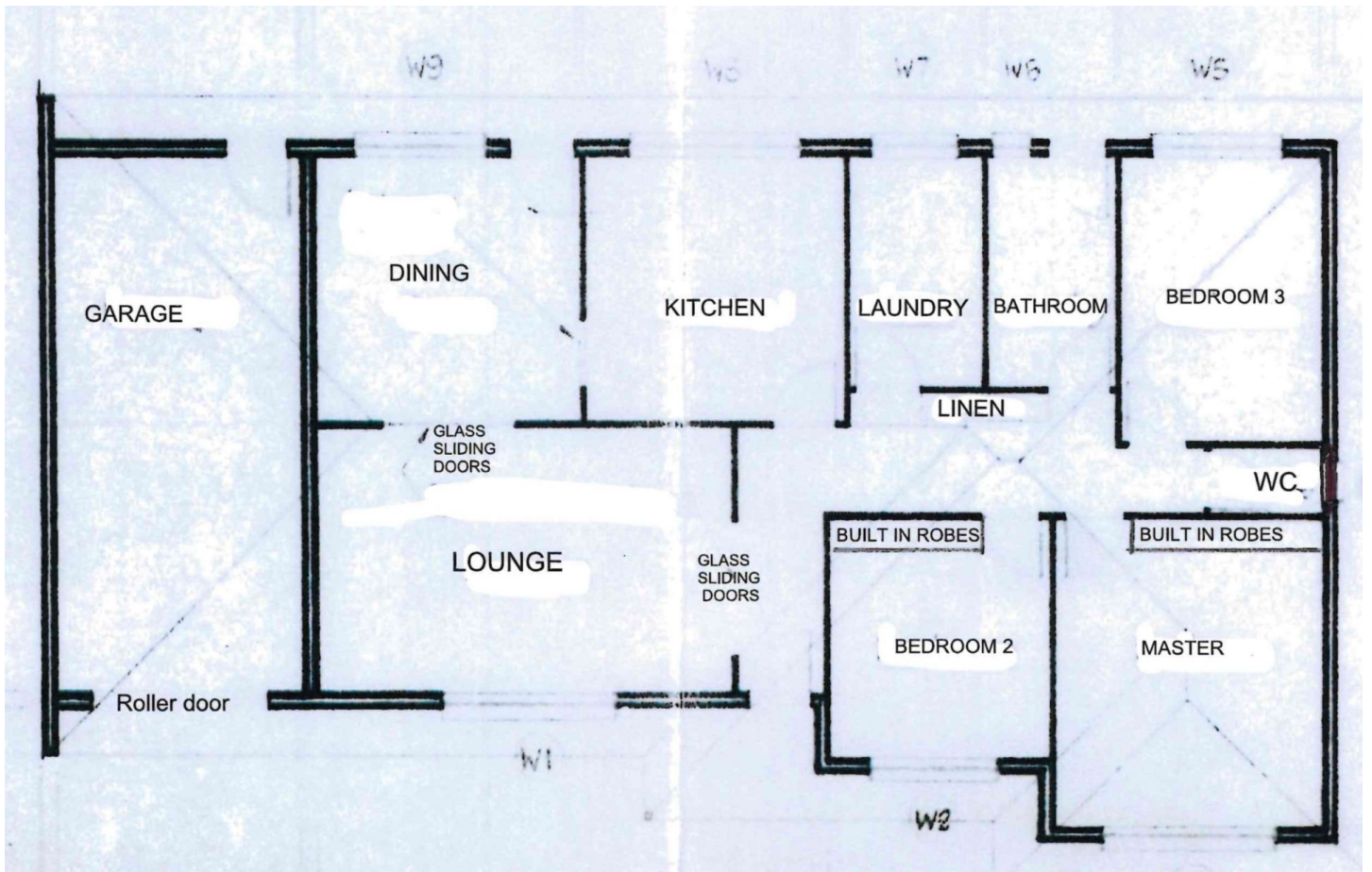
3 1 4

Immaculate owner-built full brick tiled roof home with concrete floors, providing 3 large bedrooms (bedrooms 1 & 2 with BIR's), aluminium windows, roller shutters, large entrance hall, formal lounge with built in bar and oil heater. Large separate formal dining room, big kitchen/meals area with upgraded cupboards, wall oven, bench plate stove top and dishwasher and window overlooking the rear garden, spacious laundry with numerous built in cupboards and terrazzo floor, large bathroom with terrazzo floor, shower, bath, vanity and separate toilet. The home offers quality fittings and fixtures throughout and R/C ducted air-conditioning system with double insulated roof.

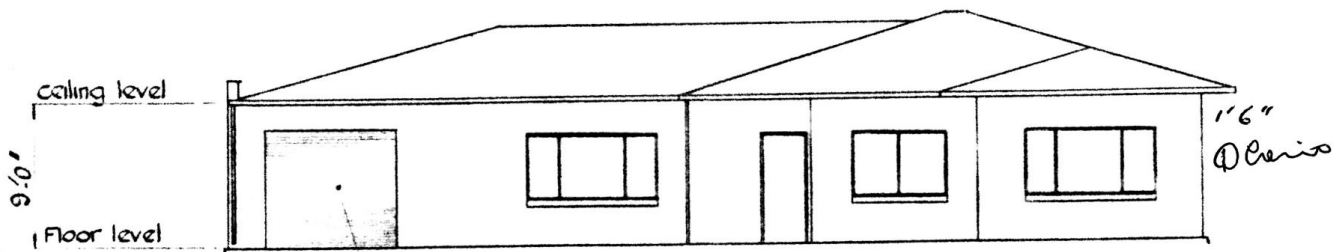
Externally this approx. 800 sqm allotment offers offers garage under main roof with roller door, tiled floor and rear

[For full version visit the website](#)

**Type** : House  
**Price** : \$405,000  
**Land Size** : 800 sqm  
**View** : <https://www.petercalliss.com.au/sale/sa/eyr-e-peninsula/whyalla-stuart/residential/house/8027066>



REAR ELEVATION



"Roll-a-door"  
Fitted to manuf. spec.

FRONT ELEVATION