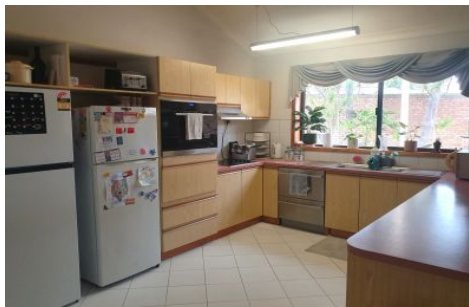




# Peter Calliss

R E A L E S T A T E



#### 4 Jordan Close Whyalla Jenkins SA

4 2 4

Built in 1989 on a secluded approximately 954 sqm irregular shaped allotment this home offers a grand floor plan with high ceilings, an impressive light filled entrance foyer and a private open air paved outdoor area sheltered from the elements that invites the outside living area inside to continue that feeling that the whole property presents ?"a sense of space and solitude"

There are 4 well sized bedrooms set away from the main living areas, master with built in robes and a separate oversized fully tiled ensuite with spa, separate shower and vanity and built in robes to the other 3 spacious bedrooms.

To the heart of the home is a generous kitchen open plan casual dining area with tall ceilings , two separate lounge

**Type** : House  
**Price** : \$575,000  
**Land Size** : 954 sqm  
**View** : <https://www.petercalliss.com.au/sale/sa/eyre-peninsula/whyalla-jenkins/residential/house/8104821>

[For full version visit the website](https://www.petercalliss.com.au)

<https://www.petercalliss.com.au>

